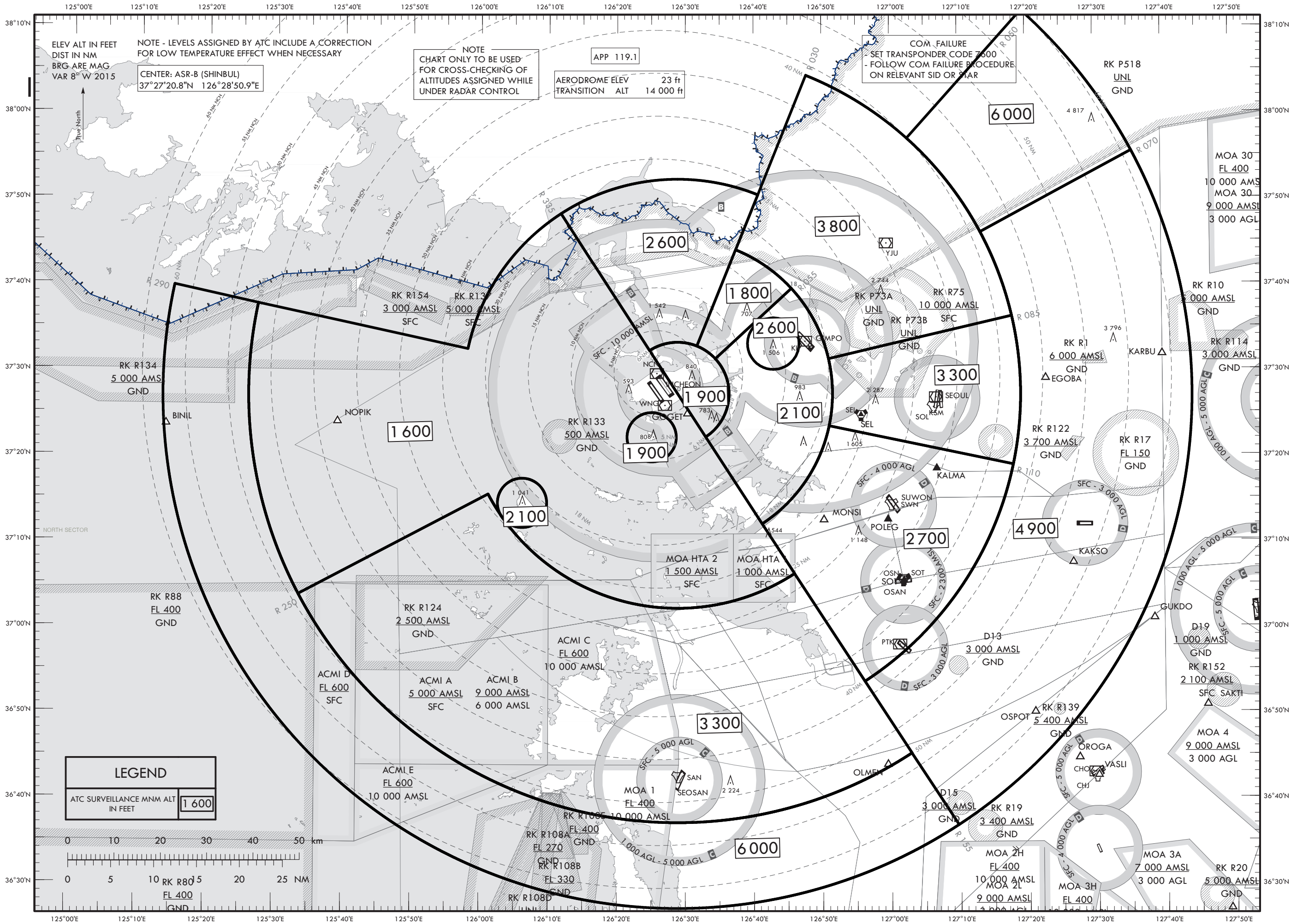


TMA SEOUL

ATC SURVEILLANCE MINIMUM ALTITUDE CHART - ICAO



ELEV ALT IN FEET
DIST IN NM
BRG ARE MAG
VAR 8° W 2015

NOTE - LEVELS ASSIGNED BY ATC INCLUDE A CORRECTION
FOR LOW TEMPERATURE EFFECT WHEN NECESSARY
CENTER: ASR-B (SHINBUL)
37°27'20.8"N 126°28'50.9"E

NOTE
CHART ONLY TO BE USED FOR
CROSS-CHECKING OF
ALTITUDES ASSIGNED WHILE
UNDER RADAR CONTROL

APP 119.1
AERODROME ELEV 23 ft
TRANSITION ALT 14 000 ft

COM FAILURE
SET TRANSPONDER CODE 7000
FOLLOW COM FAILURE PROCEDURE
ON RELEVANT SID OR STAR

RK P518
UNL
GND

MOA 30
FL 400
10 000 AMSL
MOA 30
9 000 AMSL
3 000 AGL

RK R10
10 000 AMSL
GND

RK R114
3 000 AMSL
GND

RK R11
6 000 AMSL
GND

RK R17
FL 150
GND

RK R122
3 700 AMSL
GND

RK R124
2 500 AMSL
GND

RK R139
5 400 AMSL
GND

RK R152
2 100 AMSL
SFC SAKTI

MOA 4
9 000 AMSL
3 000 AGL

RK R19
3 400 AMSL
GND

MOA 2H
FL 400
10 000 AMSL

MOA 3A
7 000 AMSL
3 000 AGL

RK R20
5 000 AMSL
GND

LEGEND

ATC SURVEILLANCE MIN ALT IN FEET	1 600
-------------------------------------	-------

